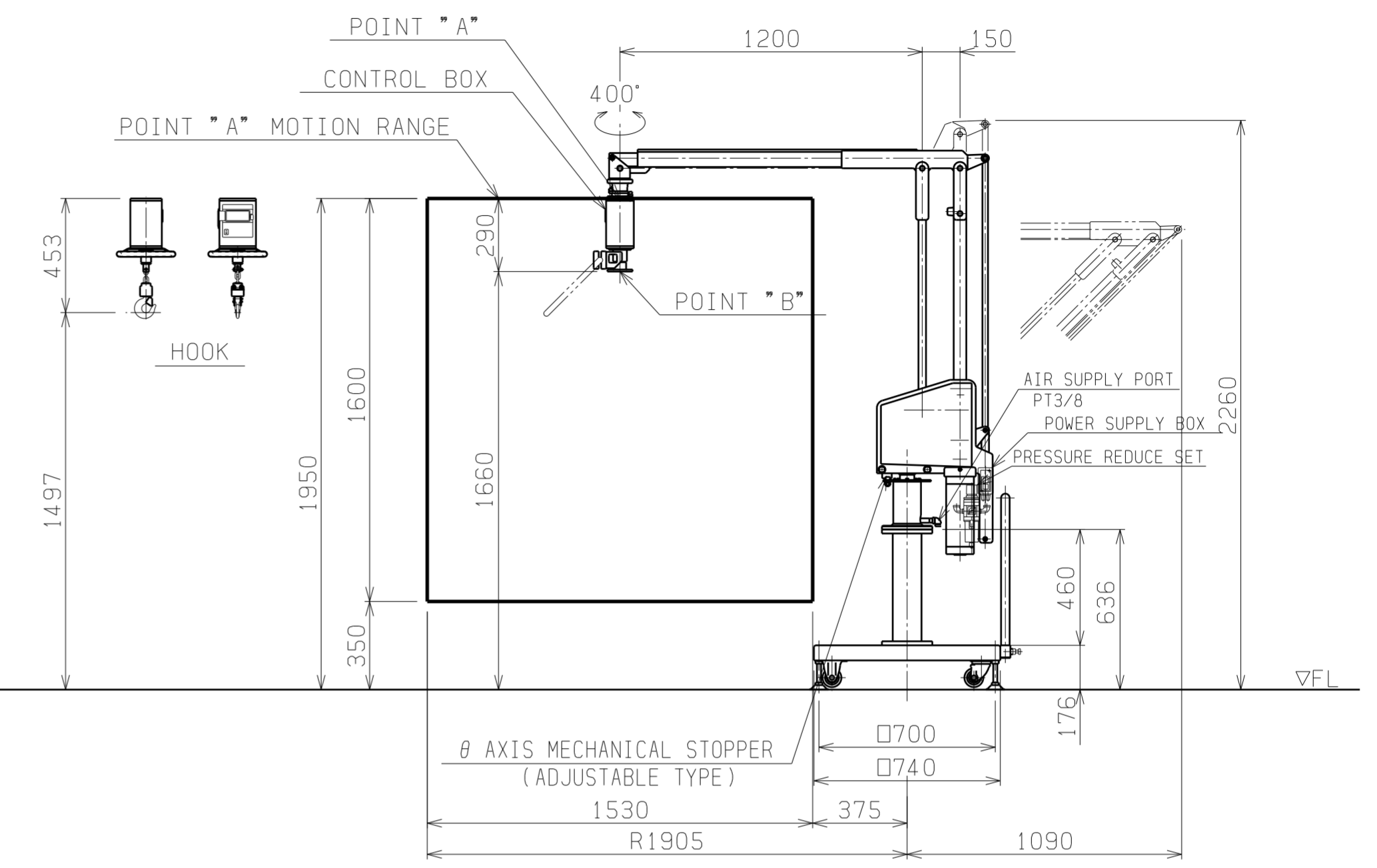
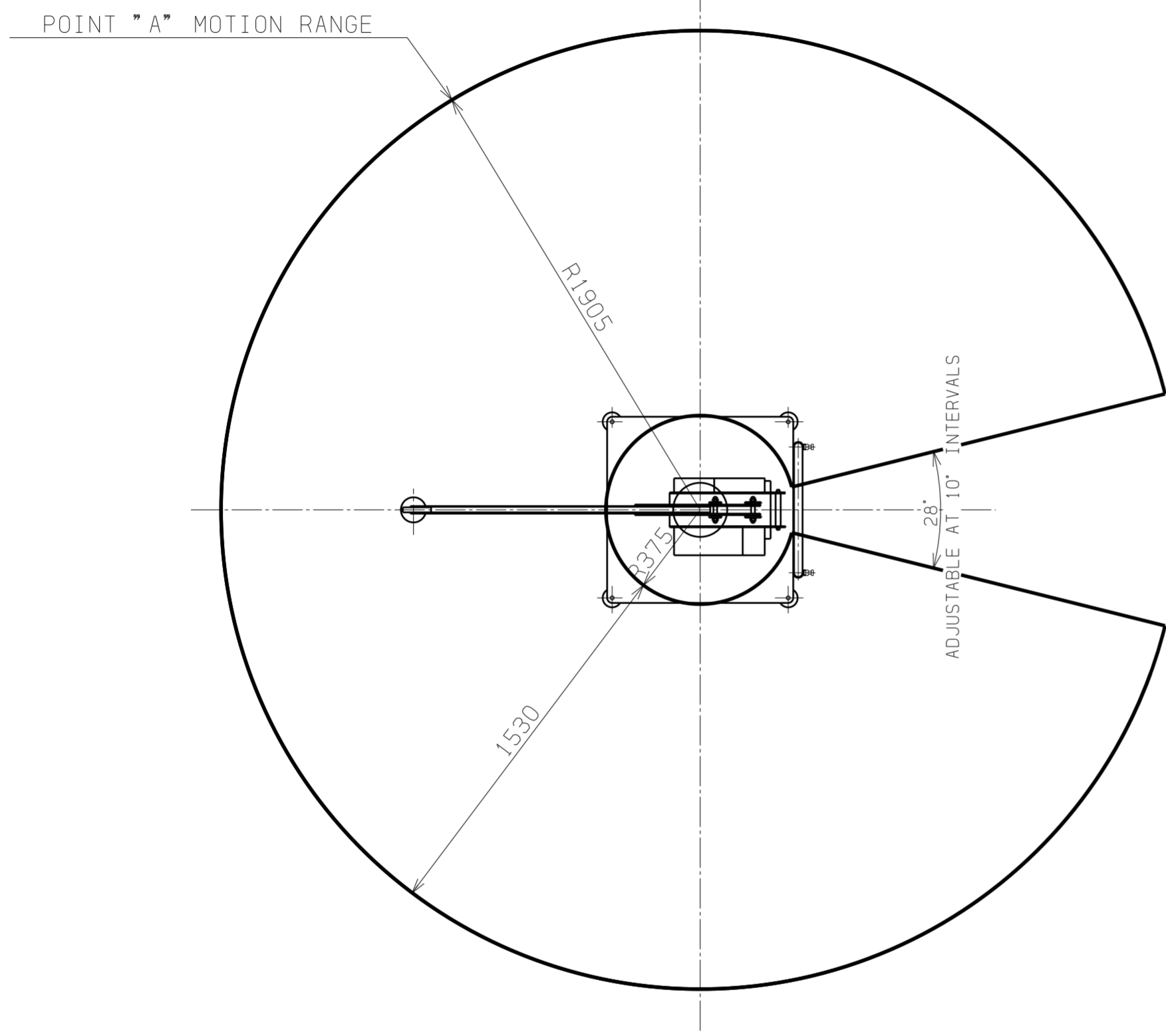


A | B | C | D | E | F | G | H | I | J | K

1  
2  
3  
4  
5  
6  
7  
8



BALAMAN SPECIFICATIONS	
MODEL	U2BMG-30W θ AXIS MECHANICAL STOPPER (ADJUSTABLE TYPE)
MAX. LOAD	30kg (BELOW POINT "A") 22kg (BELOW POINT "B")
MAX. RADIUS	R1950 mm
HORIZONTAL STROKE	1530 mm
VERTICAL STROKE	1600 mm
MAX. WORKING HEIGHT	1950 mm
MAX. MACHINE HEIGHT	2260 mm
AIR SUPPLY	0.54 MPaG
AIR CONSUMPTION	48NL/min (10 SEC CYCLE)
POWER SUPPLY	SINGLE-PHASE AC85-AC264V 50/60Hz 0.1KVA
CONTROL METHOD	
COATING	LN-15(JPMA BLACK) LN-93(JPMA WHITE)
MAIN UNIT MASS	APPROX. 100kg
BASE UNIT MASS	APPROX. 280kg
CONTROL BOX MASS	8kg
WORKPIECE MASS	kg
REMARKS	ACCESSORIES: PRESSURE REDUCE SET : POWER SUPPLY BOX