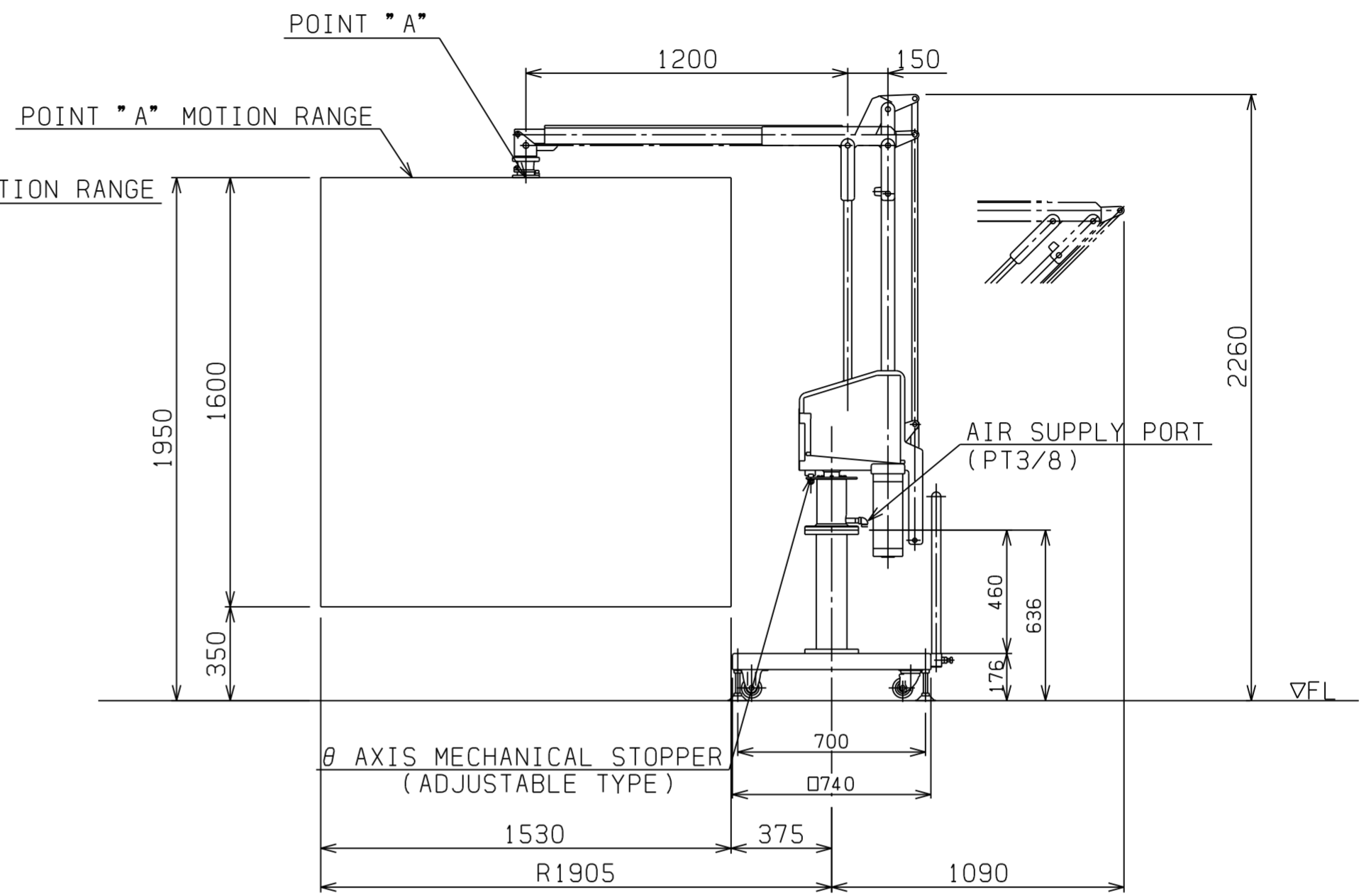
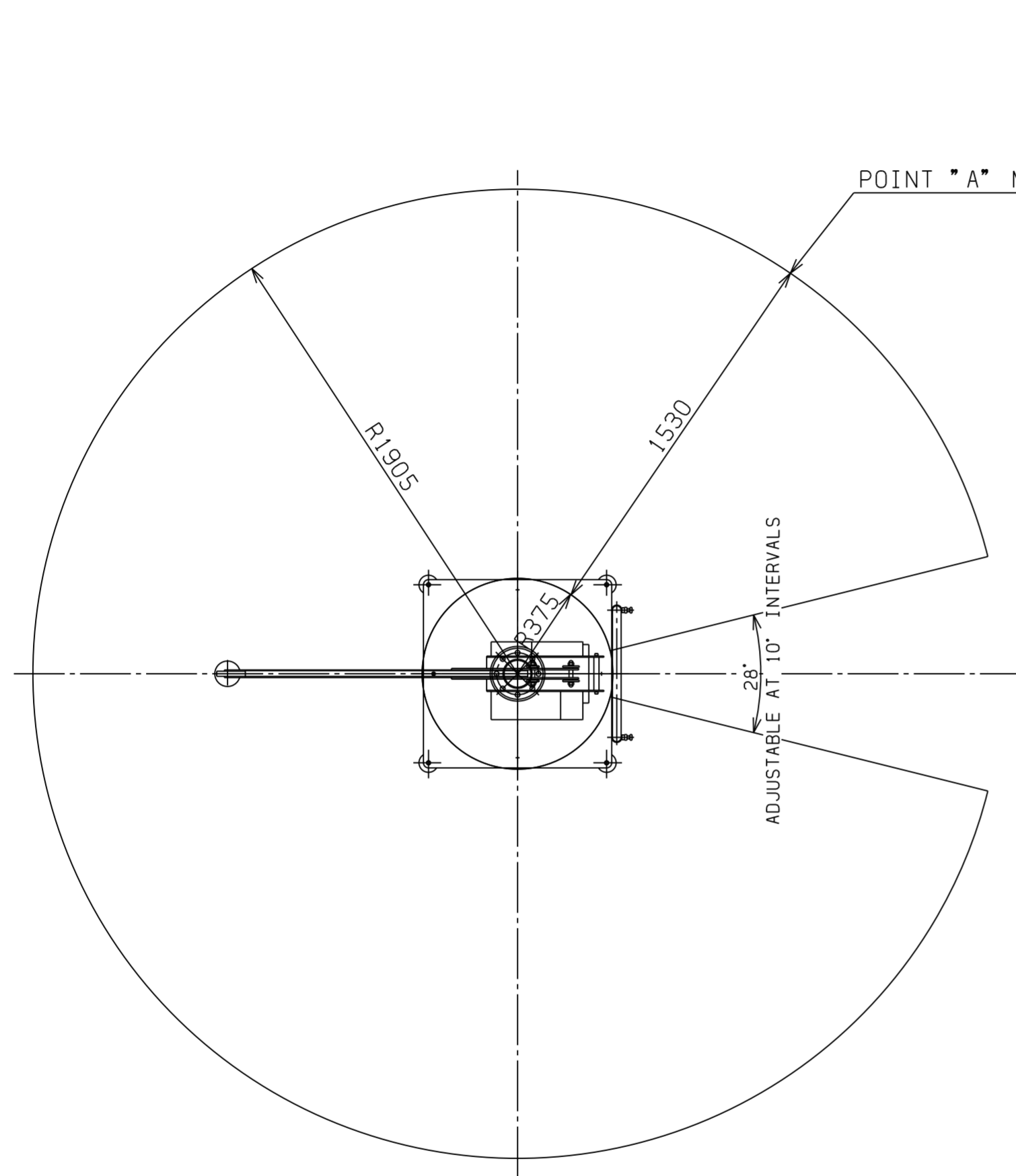


A | B | C | D | E | F | G | H | I | J | K

1  
2  
3  
4  
5  
6  
7  
8



BALAMAN SPECIFICATIONS	
MODEL	BMG-30W θ AXIS MECHANICAL STOPPER (ADJUSTABLE TYPE)
MAX. LOAD	30kg
MAX. RADIUS	R1905 mm
HORIZONTAL STROKE	1530 mm
VERTICAL STROKE	1600 mm
MAX. WORKING HEIGHT	1950 mm
MAX. MACHINE HEIGHT	2260 mm
CONTROL METHOD	
AIR SUPPLY	0.49 MPaG
AIR CONSUMPTION	48NL/min (10 SEC CYCLE)
COATING	MAIN BODY & BASE 5.5PB4.7/9.4 (MUNSELL NO.) END-EFFECTOR 10R5.5/14.5 (MUNSELL No.)
MAIN UNIT MASS	Approx. 100kg
BASE MASS	Approx. 280kg
REMARKS	PRESSURE REDUCE SET